

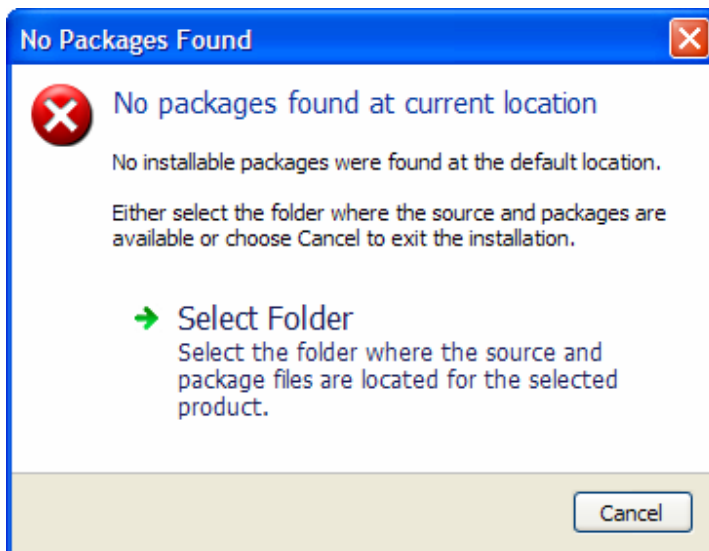
JED Software Install

Recent changes document

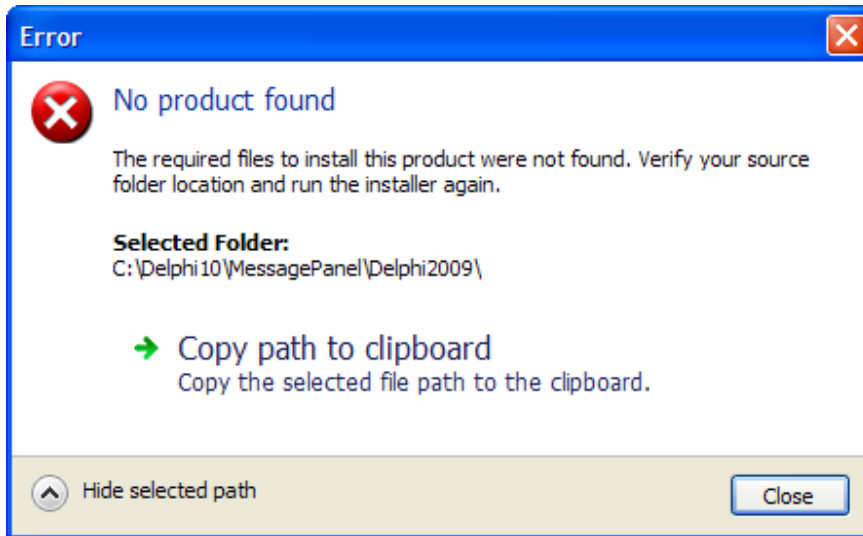
This document highlights recent changes to the JED Software Install application in order to reduce confusion for current users as well as provide an uninstall option.

Location of the Installer

Previously the installer was required to be run from the root folder of the JSDialog Pack source code. This is no longer the case. If the installer cannot find the files it requires for the install to proceed, the user is prompted to select a folder where those files are located.



Use the Select Folder command link to select the correct folder. If you select a folder that also does not contain the required installable files, then the following dialog is displayed and then the installer is terminated.

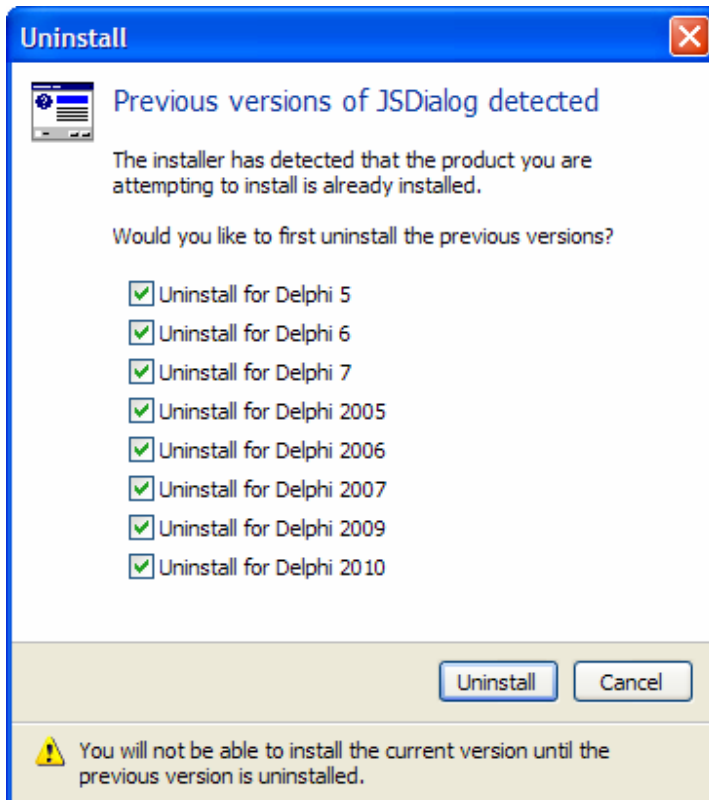


If the installable files are found, then the installer will proceed.

Uninstalling previous versions

The installer has been changed to check a number of scenarios prior to allowing an installation to continue. One of these is to generate a list of installed IDE versions as well as which of those installed IDE versions also have the product installed.


If an installed IDE version of the product already installed, then the following dialog will display.



This dialog allows you to select which IDE versions you would like to uninstall the product from. Take note of the footer warning message – if you don't uninstall a particular IDE versions product first, you cannot install the new version.

To not uninstall any products, press the Cancel button. If you do press the Cancel button and there are no installed IDE versions that require the product installed, then the following dialog will display and the installer will terminate.

Information

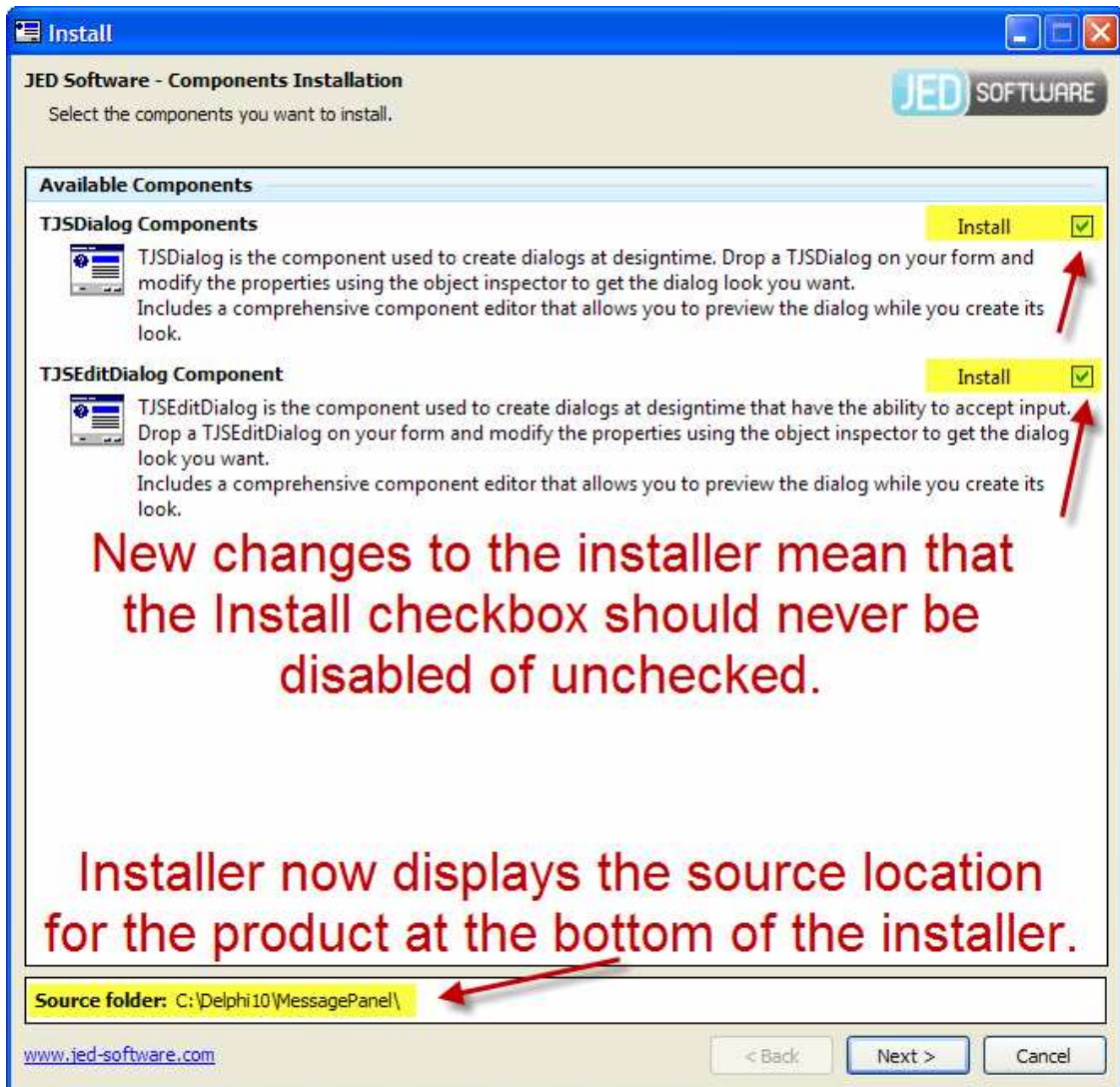
 No product to install

All of the IDE versions installed on this system has the product already installed.
The installation will be cancelled.

Close

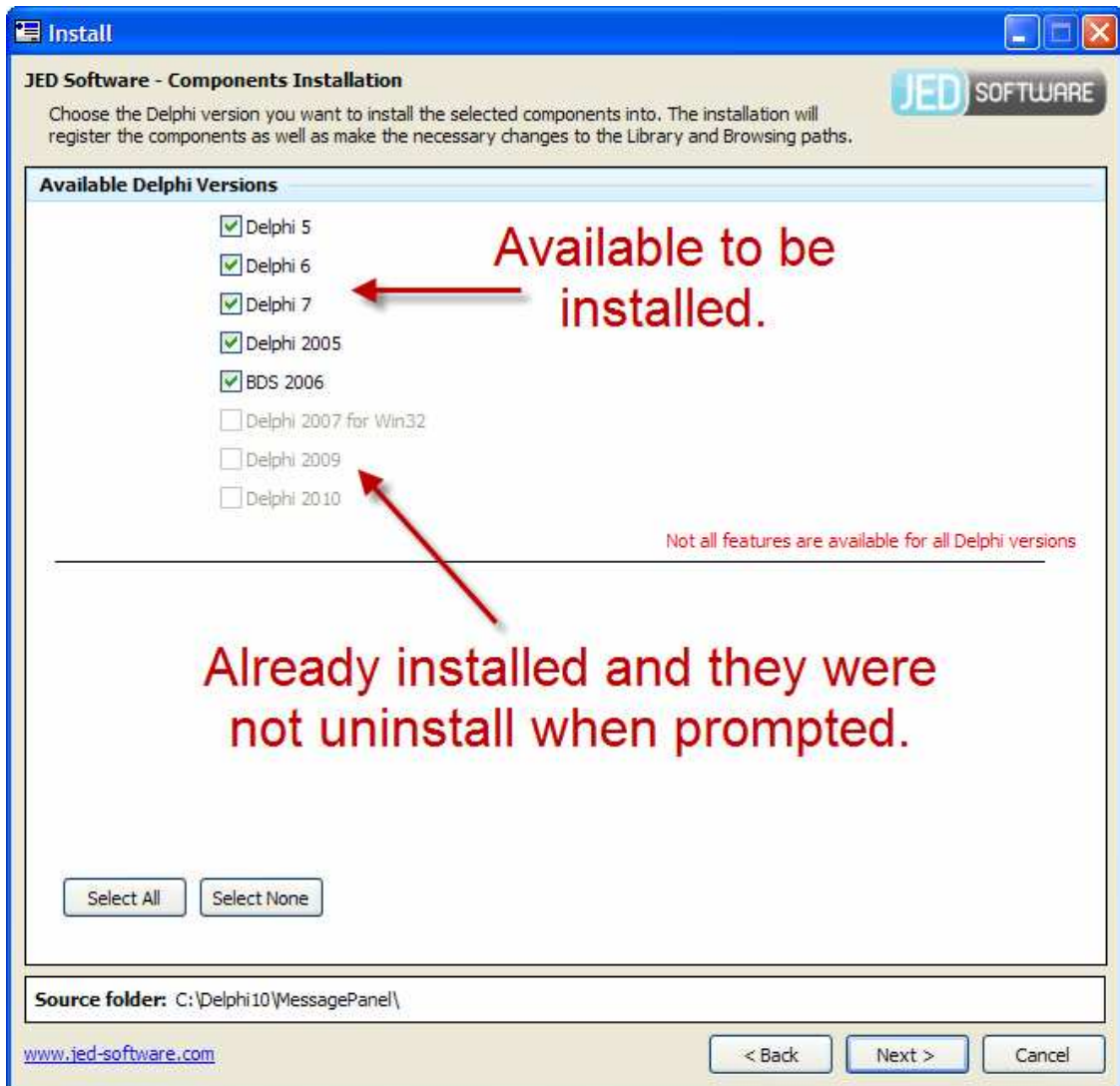
Main interface changes

The user interface of the installer has had a minor change. The source folder from where the files to install are being read from is now displayed at the bottom of the main window. Also with the new Uninstall capability of the installer, the Install checkboxes available against each of the products should no longer be disabled. IF the checkboxes were previously disabled, this meant that the installer had no product to install.



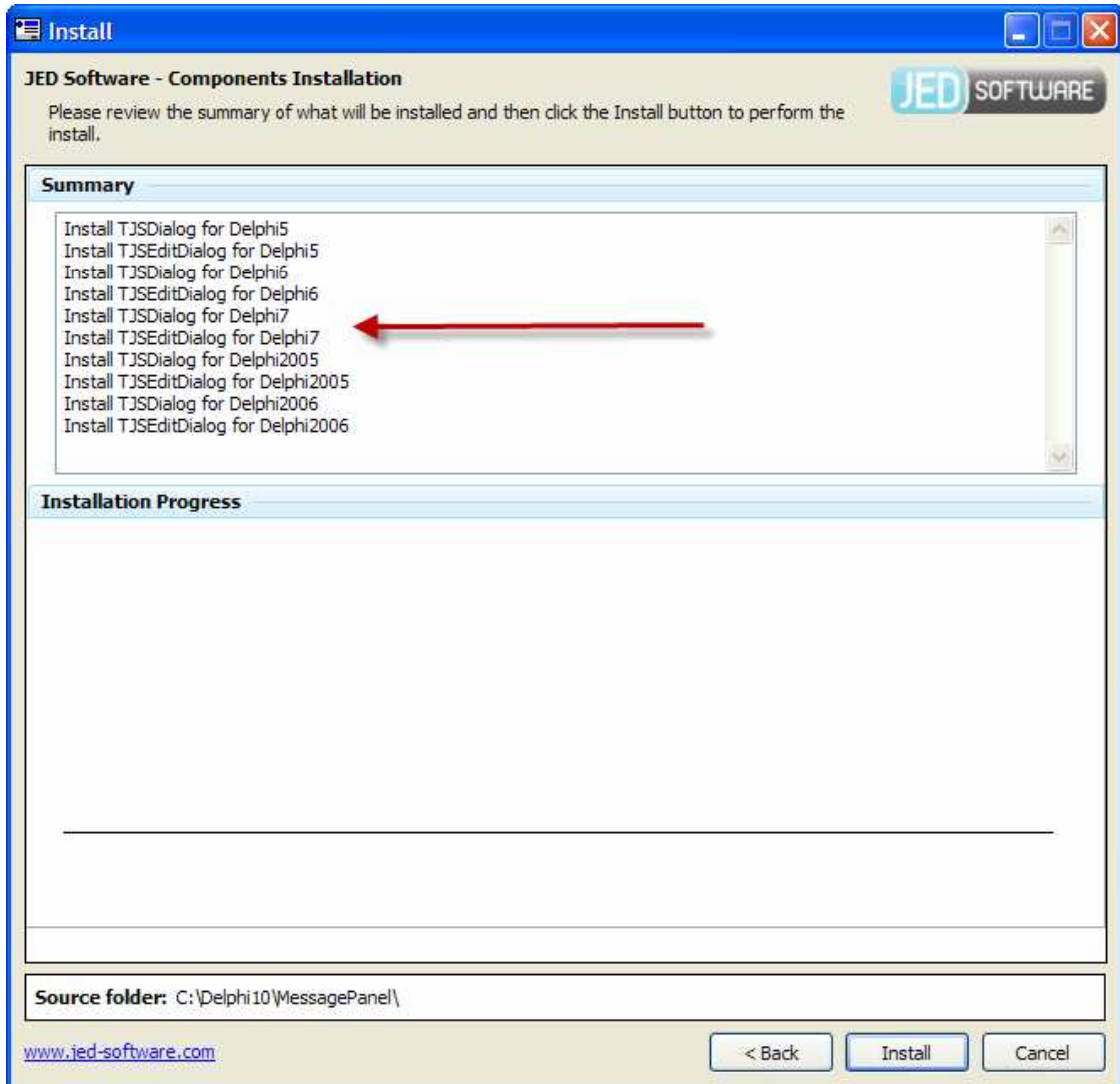
Available Delphi Versions changes

The Available Delphi Versions page will now only display the installed IDE versions your system has. If the IDE version does not have the product installed, then the checkbox for the IDE version will be visible and enabled. If an IDE versions checkbox is visible but disabled, then that IDE version already has the product installed.



Summary Information

In the summary window, before pressing the Install button, a list of the products and the IDE versions that are going to be installed for that product is listed. If you do not see the product and IDE version listed, then the product will not be installed for that version.



Once Installed

When the installer has finished a prompt is displayed to the user. This prompt states that the user should verify that the path for the installed IDE versions packages has been applied to the PATH environment variable. By default the installer attempts to add these paths on to the global PATH variable. However sometimes this can fail to work on some systems and must be added manually.

To manually modify the environment PATH variable you **MUST** have closed down all versions of Delphi you have running. The installer should not be executed with a copy of the Delphi IDE running.

Modifying environment variables is located in the Property pages for 'My Computer' or 'Computer' depending on your operating system version.

The path to add depends on the installed IDE versions.

Installed IDE version	Path
Delphi5	<SourceFolder>\Delphi5
Delphi6	<SourceFolder>\Delphi6
Delphi7	<SourceFolder>\Delphi7
Delphi2005	<SourceFolder>\Delphi2005
Delphi2006	<SourceFolder>\Delphi2006
Delphi2007	<SourceFolder>\Delphi2007
Delphi2009	<SourceFolder>\Delphi2009
Delphi2010	<SourceFolder>\Delphi2010

Common Installation Issues

Issue: Package not found

Solution: This means that the environment PATH variable has not been updated successfully. Follow the details found in the Once Installed section for how to update the environment path variable.